

**Terminal advisory group presentation**  
**Luis Núñez, Head of European Affairs of the Port of Algeciras**  
**TAG spokesman**





Topics for the meeting:

- 1. Update on terminals in Atlantic RFC**
- 2. Traffic update: ports and inland terminals**
- 3. Request and demands**
- 4. What to expect from 2023**



## Update on terminals in Atlantic RFC

	PORTUGAL	SPAIN	FRANCE	GERMANY
<b>8 PORTS</b>	2 Port of Aveiro Port of Setubal	4 Port Of Algeciras Port Of Huelva Port of Sevilla Port of Bilbao	2 Port of Le Havre Port of Strasbourg	
	PORTUGAL	SPAIN	FRANCE	GERMANY
<b>50 INLAND TERMINALS</b>	14 operational VALONGO; VILA NOVA DE GAIA; PAMPILHOSA; MANGUALDE; GUARDA; ALFARELOS; ENTRONCAMENTO; TVT; BOBADELA; CONTEPARQUE; ALB; SPC; ALCONT; POCEIRÃO.	13 operational IRÚN; PASAIA, JÚNDIZ; BILBAO; NOAIN; TERCAT; VALLADOLID; ZARAGOZA; ABROÑIGAL; VICÁLVARO; COSLADA, MAJARABIQUE, CÓRDOBA EL HIGERÓN, SAN ROQUE; 3 under construction Badajoz, Mérida, Navalморal	10 Operational LE BOURGET; NOISY-LE- SEC; WOIPPY; HAUSBERGEN; VALENTON; SAINT-PIERRE-DES-CORPS; COGNAC; BORDEAUX – HOURCADE; BAYONNE MOUGUERRE; HENDAYE; AMBROGIO	10 Operational BECKINGEN PUHL; LUDWIGSHAFEN KTL; LUDWIGSHAFEN CONTARGO; MANHEIM CONTARGO; MANHEIM DP WORLD LOGISTICS; MANHEIM- HANDELSHAFEN DUSS; KIRKEL TERMINAL; GERMERSHEIM DP WORLD LOGISTICS; SAARBRUECKEN

# Huelva Rolling Motorway





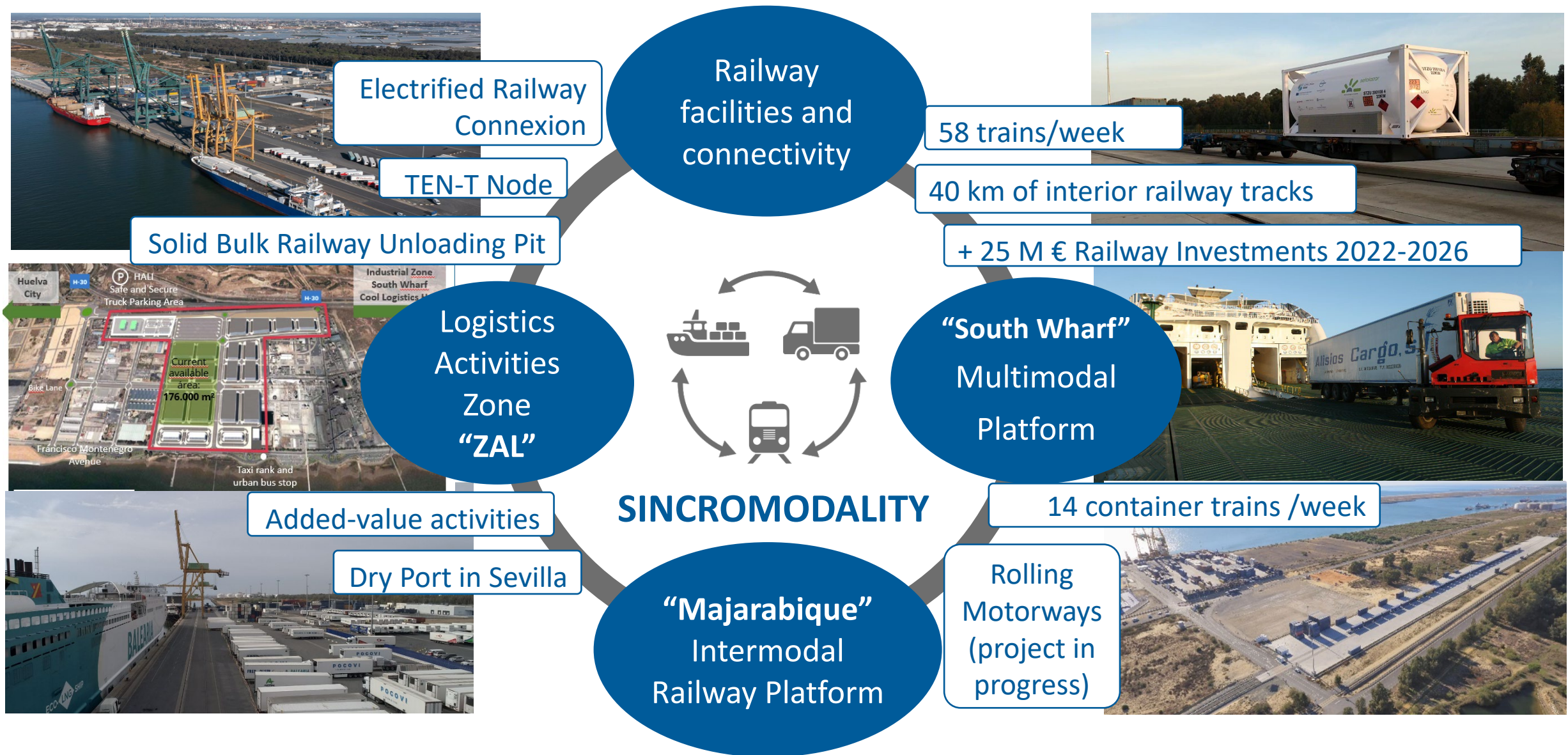
Port of Huelva

Rolling Motorway

Huelva - Madrid –  
Zaragoza – Vitoria  
– France



# INTERMODAL STRATEGY



# INTERMODALITY TO SERVE THE MARKETS



## Excellent Rail Connections

1.840 trains in 2022

28% Container Trains

### Advanced infrastructure

- Direct access from the Spanish General Railway Network to the dockside railway terminal
- No railway junctions
- Regular bulk and container train connections
- Rolling motorways in project (2024)



Total Hinterland  
PIB: 538.576 M €  
Población: 28,1 M

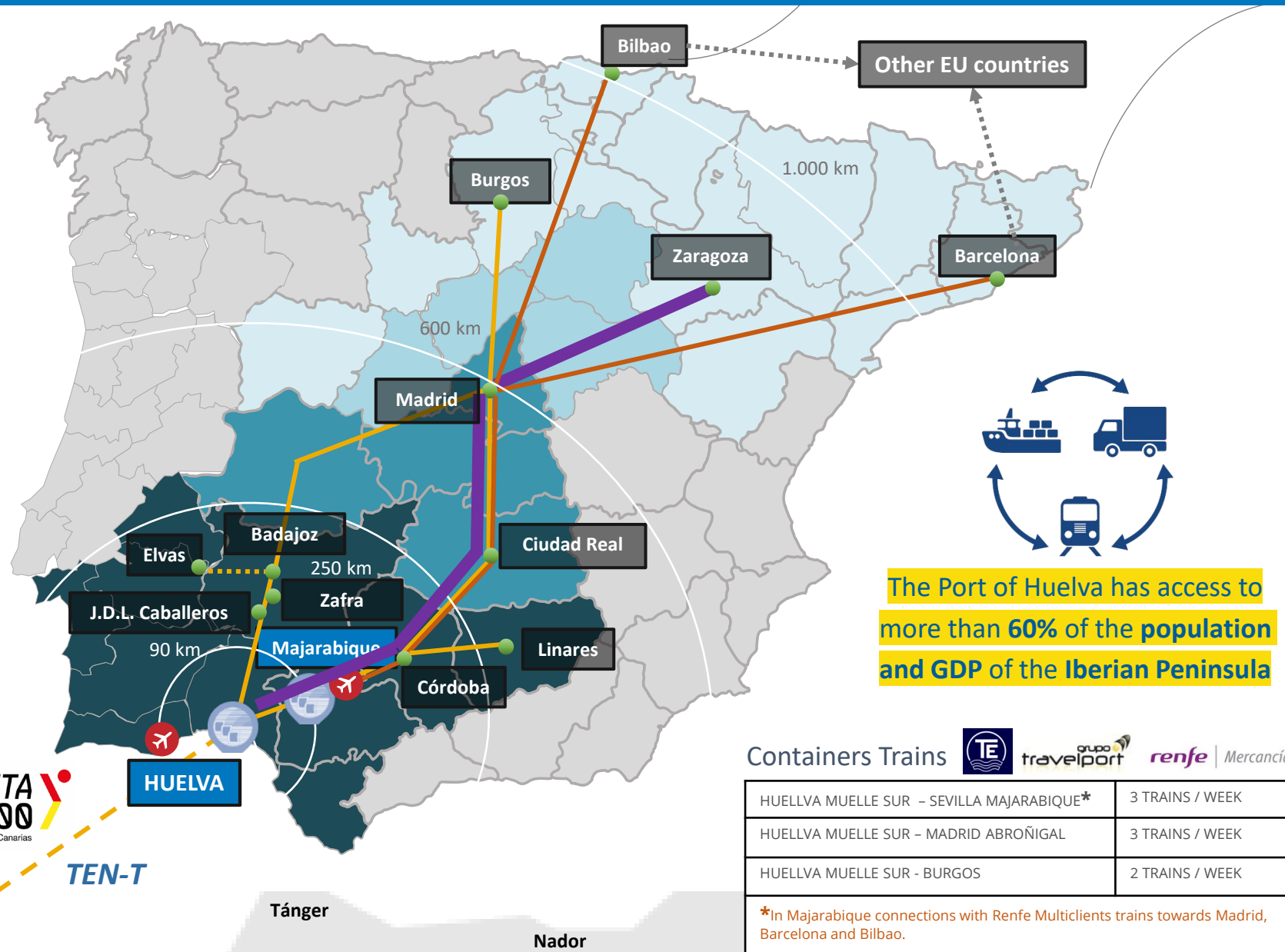


TRANS-EUROPEAN TRANSPORT NETWORK  
TEN-T CORE NETWORK CORRIDORS

CANARY ISLANDS

ruta  
1400  
Huelva - Canarias

TEN-T



The Port of Huelva has access to more than **60%** of the **population** and **GDP** of the **Iberian Peninsula**

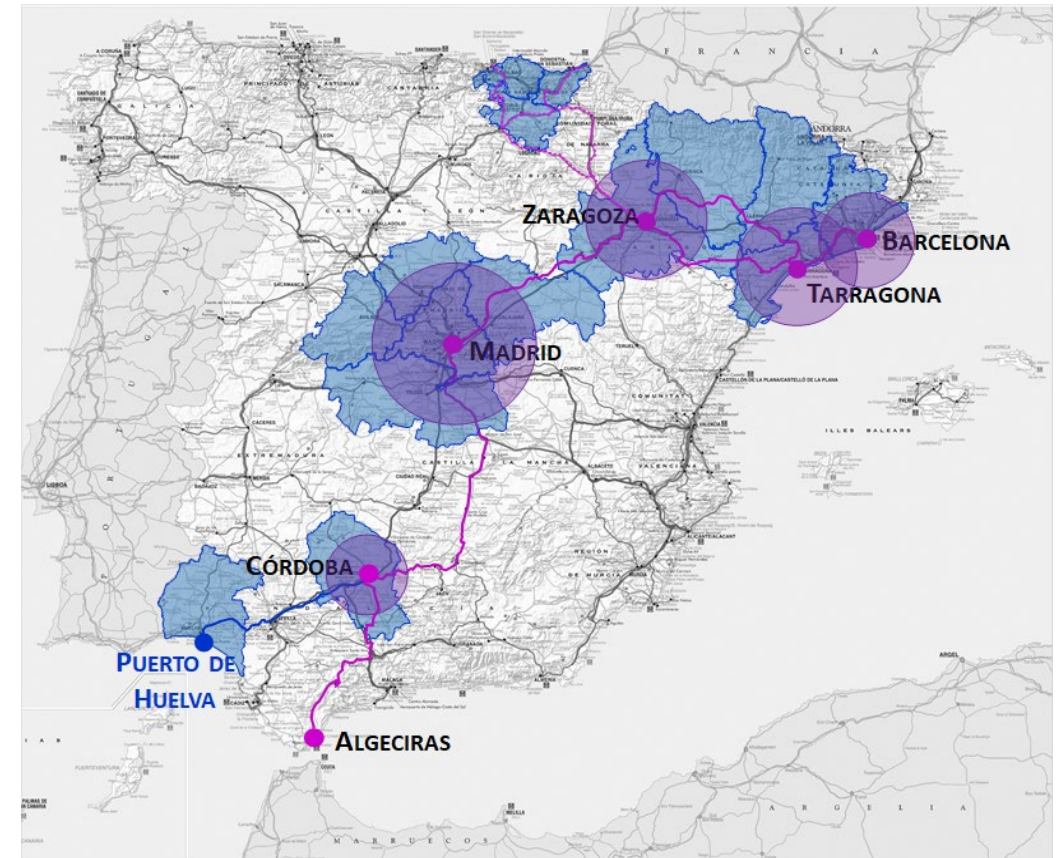
Containers Trains    Mercancías



## STUDY OF THE TRAFFIC POTENTIALLY SUITABLE FOR A ROLLING MOTORWAY SERVICE IN THE PORT OF HUELVA

The establishment of a rolling motorway service in the Port of Huelva is mainly justified by:

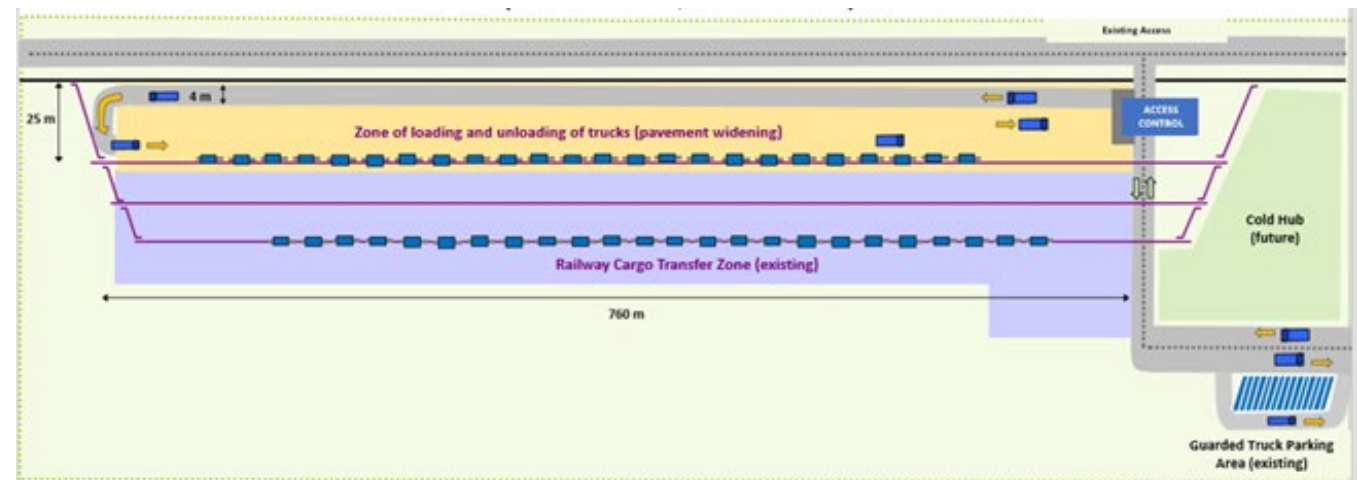
- The growth of **Ro-Ro traffic** with the Canary Islands. Over 30.000 non-accompanied semi-trailers per year.
- The region of Huelva is one of the **main exporting area** in Andalusia/Spain (Holland, Belgium, France, UK).
- **Refrigerated Cargo**. Over 1,2 MTns to EU/UK exports
- **Dry Cargo**. The Port of Huelva is the **first industrial site** in Andalusia and the second in Spain.
- In total over **300.000 semitrailers** per year from Huelva hinterland to Madrid – North Spain and EU/UK





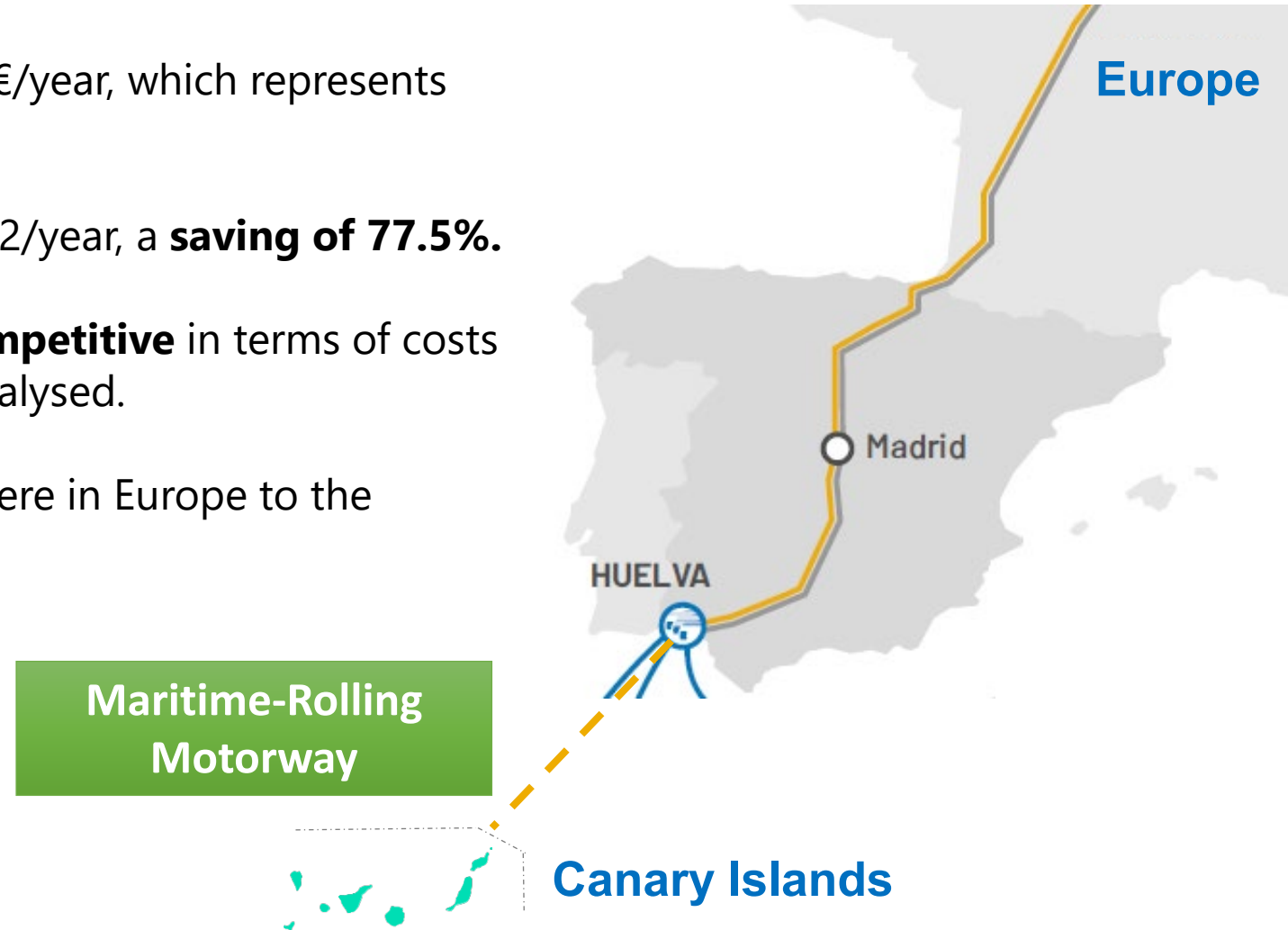
## RAILWAY INFRASTRUCTURE

- **Extension** of the current Railway Terminal of the Port of Huelva. → Engineering completed.
- **Electrified traction** from Huelva to any destinations considered in the Rolling Motorway Project
- **Resiliency** guaranteed through the comprehensive section Huelva – Zafra – Mérida - Madrid
- Construction of two sidings between Huelva and Seville to circulate **750 m** trains length.
  - 11 M€.
  - First one in tendering process.



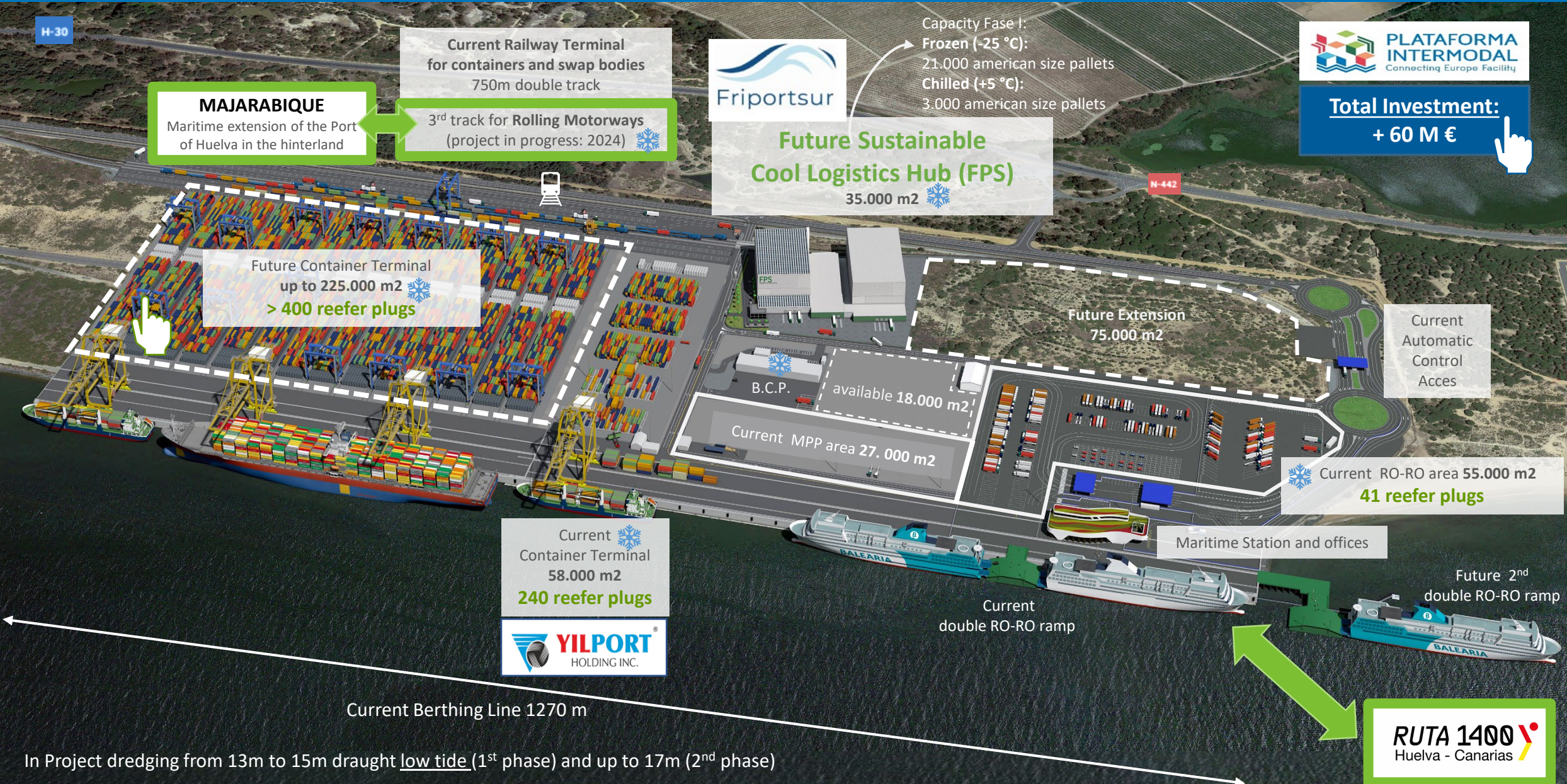
## MAIN ADVANTAGES

- The **external cost savings** of up to 14.8 M €/year, which represents **86%** of the external road costs.
- Avoidance of **emissions** of up to 36 t-CO<sub>2</sub>/year, a **saving of 77.5%**.
- The Port of Huelva Rolling Motorway is **competitive** in terms of costs and timetables in almost all the services analysed.
- Allowing a semitrailer to travel from anywhere in Europe to the **Canary Islands** without a driver.





# SOUTH WHARF. Expansion actions





# SOUTH WHARF. Currently



All means of transport integrated and synchronized







Port of Huelva

Your trusted partner for Global Logistics Chains

CLIENT ORIENTED | INTERMODAL | SUSTAINABLE | DIGITAL



Thank you for your attention

[www.puertohuelva.com](http://www.puertohuelva.com)





- Recently joined the Atlantic RFC
  - Huelva
  - Sevilla
- Bilbao Port Update
- Strasbourg Port Update
- Setubal Port Update



# 1. Update on terminals in Atlantic RFC

## Survey to terminals



### Requested information:

- a) Rail traffic of your terminal in 2022 in TEUs or number of boxes
- b) A list of mobile and fixed cranes in your terminal
- c) Any request or demand from an infrastructure and operational perspective that you may have for the EC authorities and/or railway infrastructure agencies.

**0% of answers**

Unifilar

### ALFARELOS

12.850 Teus  
20.240 units  
3 reach stakers

### KTL TERMINAL LUDWIGSHAFEN

342.000 units  
7 Gantry cranes for 13 tracks  
1 Gantry crane for dangerous goods

### STRASBOURG PORT

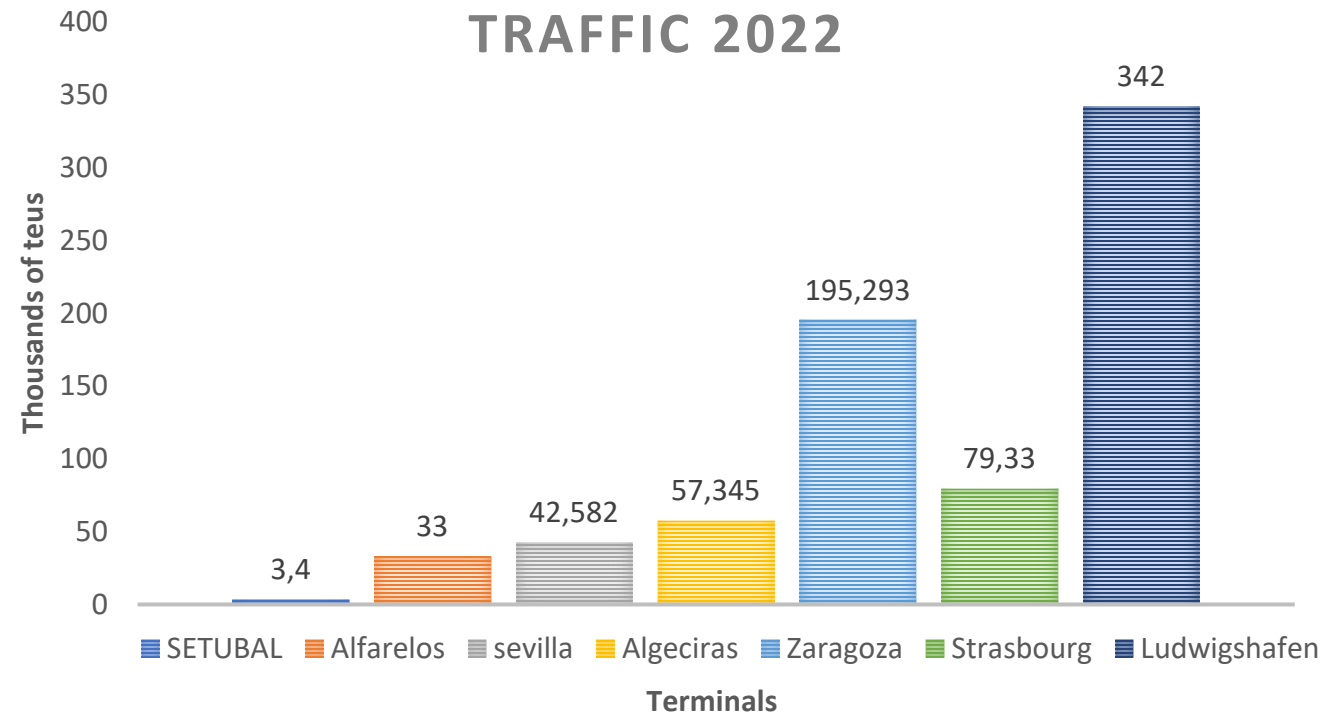
79.330 TEUS  
2 trimodal gantry crane  
1 bimodal gantry crane

## 2. Traffic update: ports and inland terminals 2022

### SETUBAL

3.400 Teus  
14 Cranes  
2 Gantry Cranes

## RAILWAY ATLANTIC TERMINALS TRAFFIC 2022



### ZARAGOZA

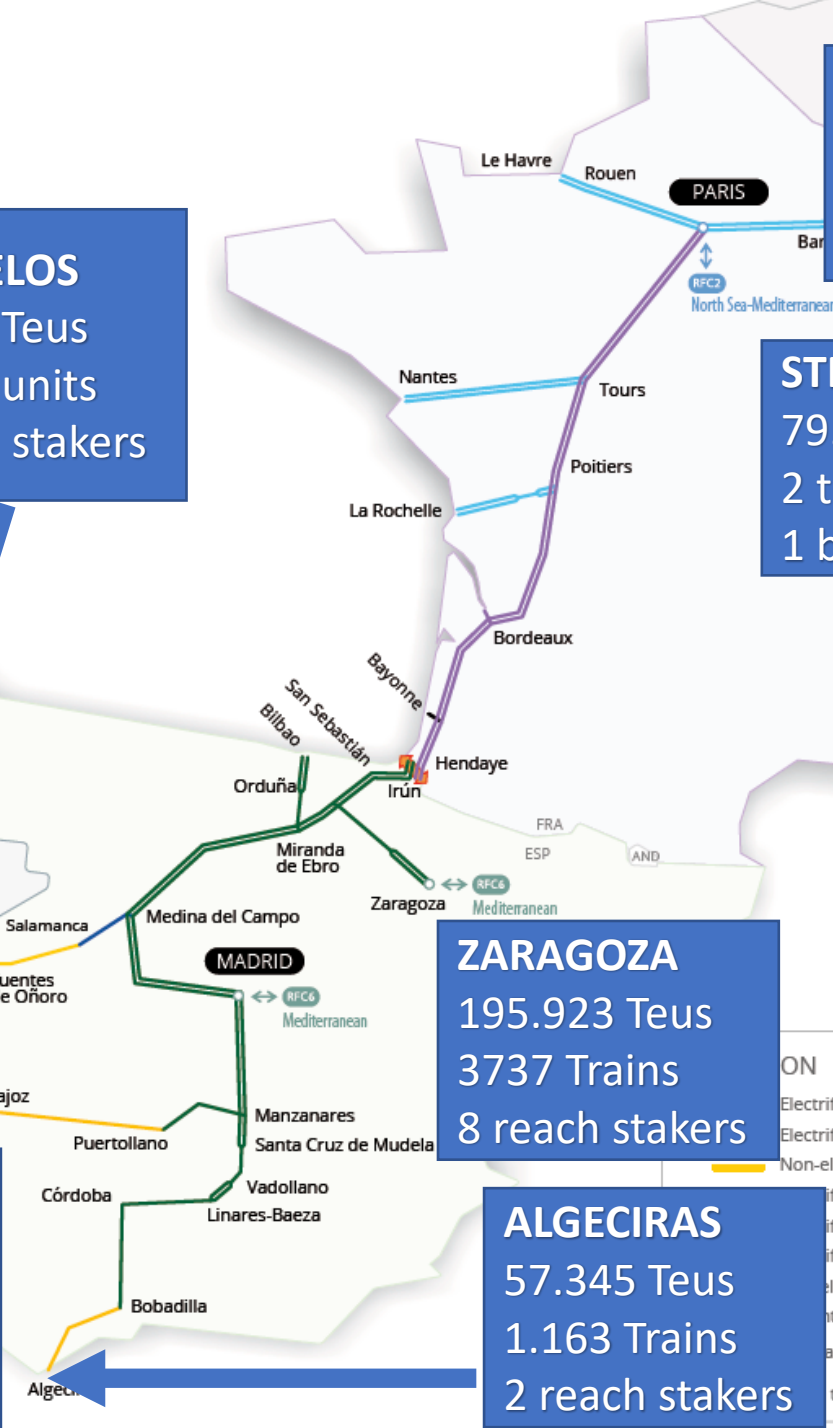
195.923 Teus  
3737 Trains  
8 reach stakers

### ALGECIRAS

57.345 Teus  
1.163 Trains  
2 reach stakers

### SEVILLA

42.582 Teus  
2 cranes  
7 reach stakers  
5 forklift





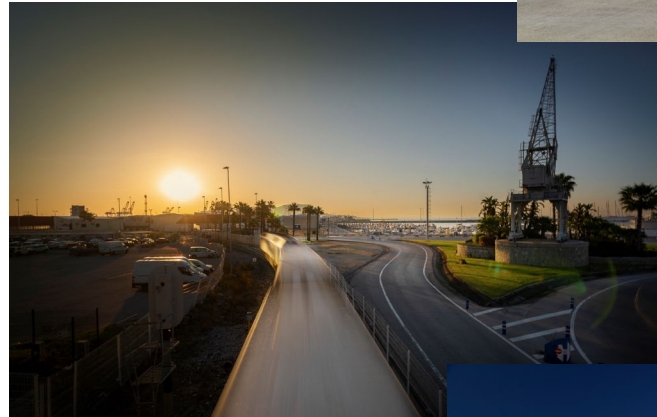


## WHAT DO WE EXPECT FROM 2023?

- **Rail Capacity Directive**
- **New TEn-T**
- **New Multianual program 2028-2034. Request for new fund topics**



## TERMINAL & RAILWAY UNDERTAKING ADVISORY GROUPS MEETING



**THANKS FOR YOUR ATTENTION!**  
*[proyectoseuropeos@apba.es](mailto:proyectoseuropeos@apba.es)*

